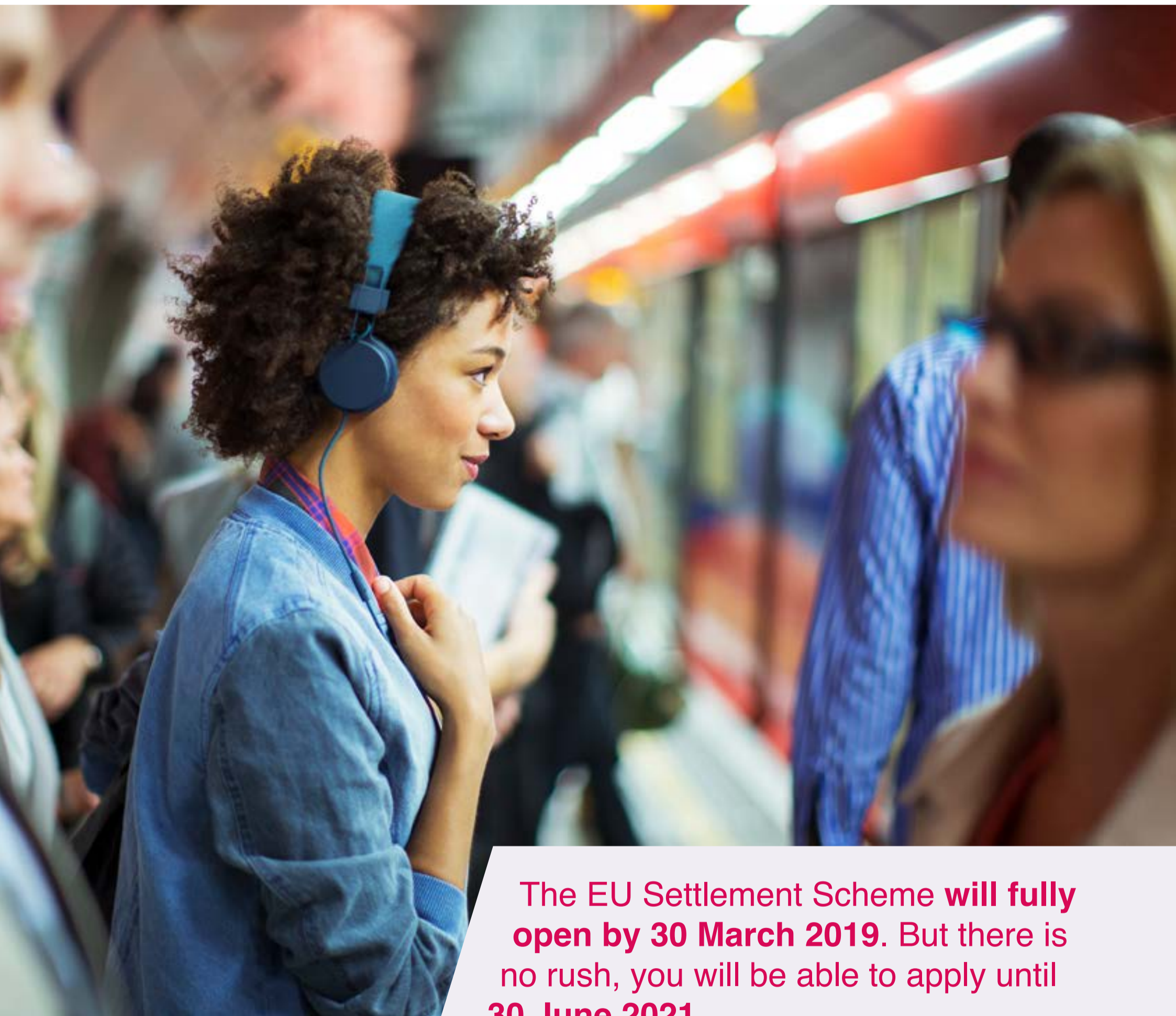


EU CITIZENS STAY INFORMED

If you want to stay in the UK beyond **31 December 2020**, you need to apply to the **EU Settlement Scheme**.



The EU Settlement Scheme **will fully open by 30 March 2019**. But there is no rush, you will be able to apply until **30 June 2021**.

For more guidance and information visit [**www.gov.uk/eu-settled-status**](https://www.gov.uk/eu-settled-status)



HM Government